

# ARCHITECTURE IRELAND

Aviva Stadium - *Populous & STW Architects*

Passive House Japan - *Key Architecture*

Sliabh Bán - *DTA Architects*

Irish Architecture Awards 2010

Rearview - *John Johansen*

€10 (INC VAT)

## 252

The Journal of the Royal Institute  
of the Architects of Ireland

RIAI





## IRISH PAVILION AT EXPO SHANGHAI

### ARCHITECTS

XXX  
r

### CLIENT - xxx

### QUANTITY SURVEYORS - xxx

### STRUCTURAL ENGINEERS - xxx

### SERVICES ENGINEERS - xxx

### MAIN CONTRACTOR - xxx

### PHOTOGRAPHY - xxx

Project size - cc m<sup>2</sup>

Value - € cc

Duration - xx

Location - Expo Shanghai

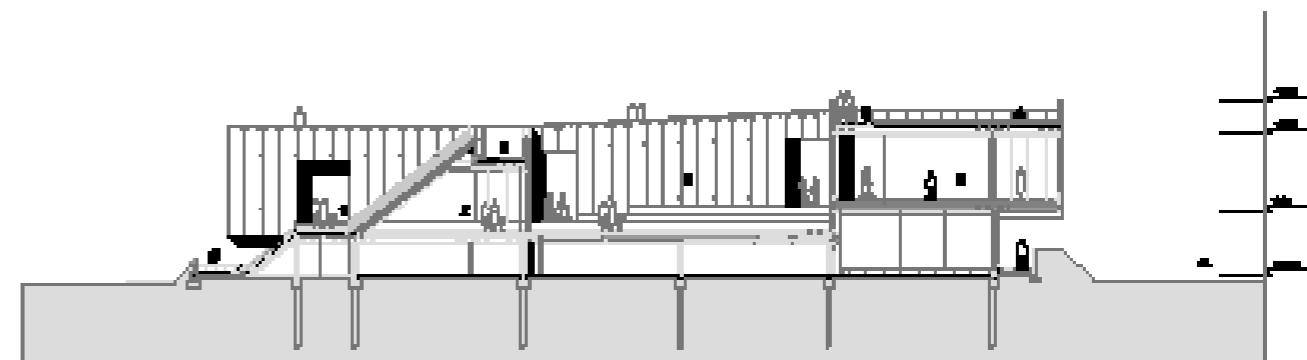
### REPORT by OPW Architects

The Irish Pavilion reflects the duality of the Irish experience and the interaction between urban and rural life, expanding on the Expo 2010 theme of "Better City, Better Life". The Pavilion is a series of semi-transparent glazed volumes, suspended over a base of grass mounds, and evokes the relationship between urban and rural, man-made and natural, building and landscape. The main grass mound forms the roof of the exhibition galleries and mirrors the point that much of what we consider to be natural in our Irish landscape is in fact man-made or influenced by man.

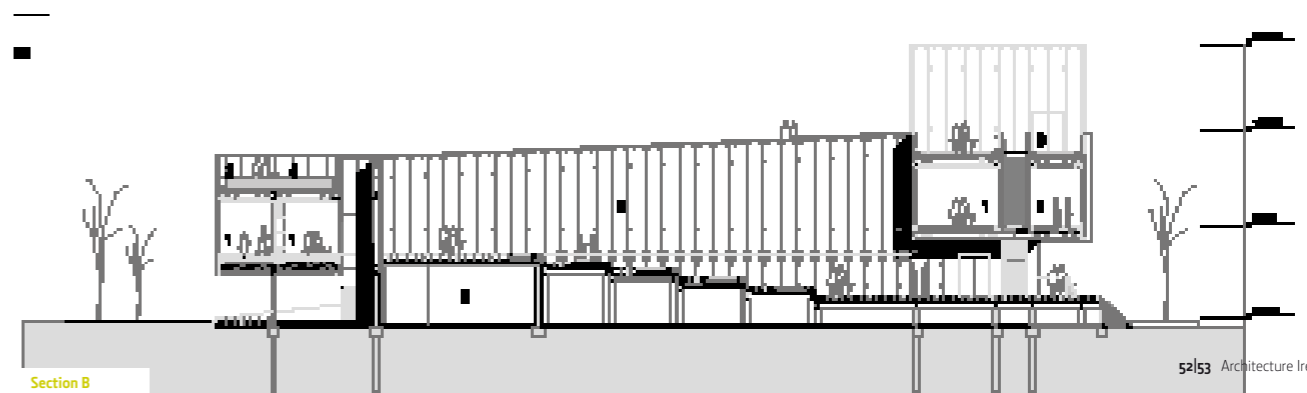
In contrast to the closed black box principle, the interior is lit by diffused light and the façades are punctuated by four large gable windows at the four corners of the Pavilion. This creates a relationship between inside and outside and allows interaction between the exhibition, the visitor, and the Expo plaza and buildings. Visitors can rest and sit in these areas and watch the movement on the plaza and conversely the public moving along the plaza can see and interact with the exhibition and visitors inside.

The circulation is gently ramped and rises externally on the grassed mound from ground level on the Expo plaza to the main entrance space at first floor level. Internally it ramps from the entrance through a series of exhibition spaces to the second floor level and back in a reverse spiral to the exit. The central stepped courtyard doubles up as a rest space for the public and as a performance space.

A VIP lounge, located at the highest level, opens onto the landscaped roofs. Offices for the Pavilion Director and his staff, seminar/ temporary exhibition space and plant areas are located beneath the exhibition spaces at plinth level. The seminar space houses temporary exhibitions, has full audio visual facilities and seating for 80, and connectivity for seminars to occur between Shanghai and Dublin. The Pavilion is air conditioned with continuous grilles at floor and ceiling junctions with the façade.



Section A



Section B

